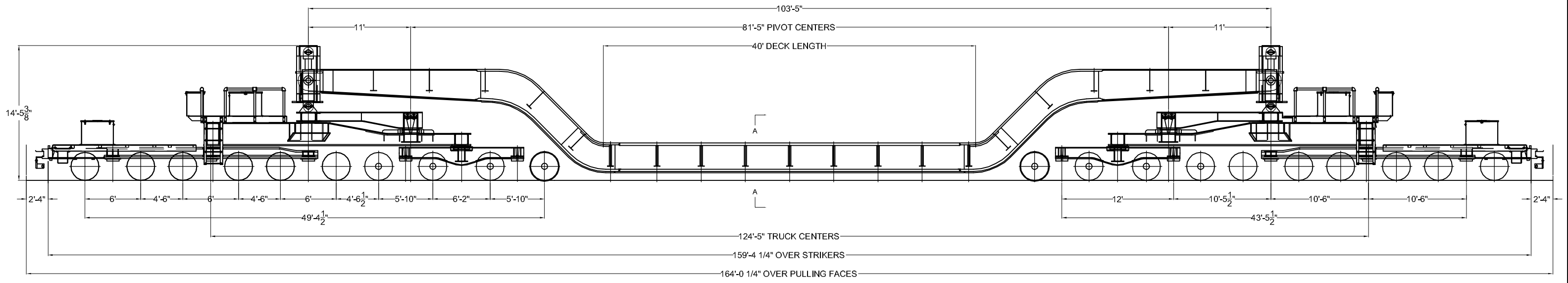


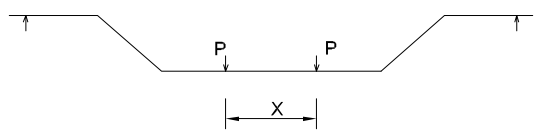
450-TON 40' DEPRESSED DECK RAILCAR WITH LIFTING & SHIFTING CAPABILITY



ALLOWABLE LOADING

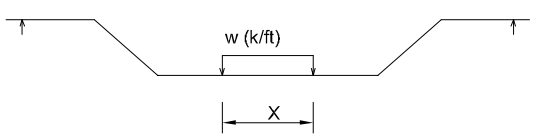
CONCENTRATED LOAD

X	P	TOTAL
4	415	830
8	433	866
12	452	894
16	473	894
20	484	894
24	484	894
28	484	894
32	484	894
36	484	894
40	484	894



UNIFORM LOAD

X	w	TOTAL
4	204	815
8	104	832
12	71	849
16	54	867
20	44	885
24	38	894
28	33	894
32	30	894
36	27	894
40	24	894



450-TON 40' DEPRESSED DECK RAILCAR SPECIFICATIONS:

LIGHT WEIGHT	535,500 LBS
MAXIMUM CAPACITY	894,500 LBS
MAXIMUM GROSS	1,430,000 LBS
LOADED CG (DECK AT 48" ATR)	57" ATR
MAXIMUM AXLE LOAD	71,500 LBS PER AXLE
SPRING TRAVEL	3-11/16"
WHEEL DIAMETER	36"
CLEARANCE	PLT C (TANGENT TRACK)

DECK LENGTH	40'
DECK WIDTH	9' 6"
DECK HEIGHT	ADJUSTABLE

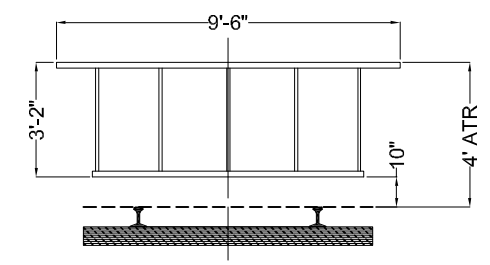
DO NOT HUMP EMPTY OR LOADED.
MAX SPEED LOADED: 25 MPH EMPTY: 40 MPH

NOTE: WEIGHTS ARE PRELINARY.

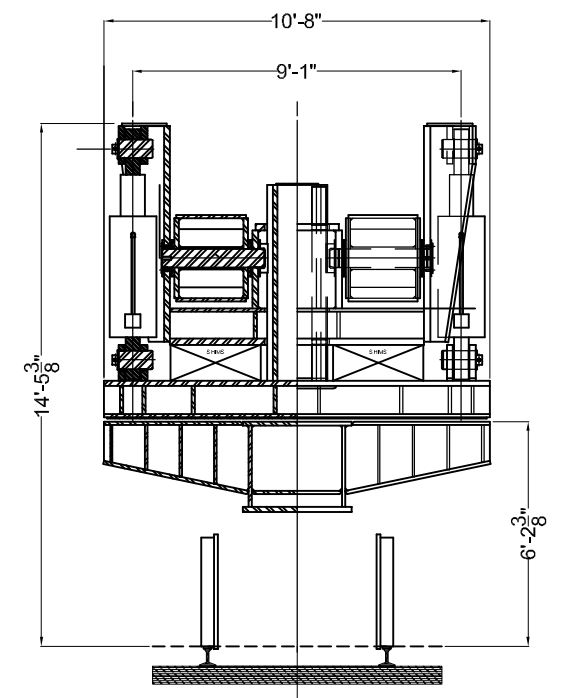
CAR SHIFTING CAPABILITY:

VERTICAL (BASED ON 4' 0" DECK HEIGHT)
LIFT = +13"
LOWER = -11"
- WHEN UNDERSIDE OF DECK IS TOUCHING TOP OF RAIL, CAR CAN LIFT 24"
- DECK TRAVEL HEIGHT OF CAR IS VARIABLE

LATERAL
CAPABLE OF SHIFTING CAR BODY 14"
(EITHER SIDE OF CENTER LINE ON TANGENT TRACK)



VIEW A-A



VIEW AT VERTICAL LIFT CYLINDERS

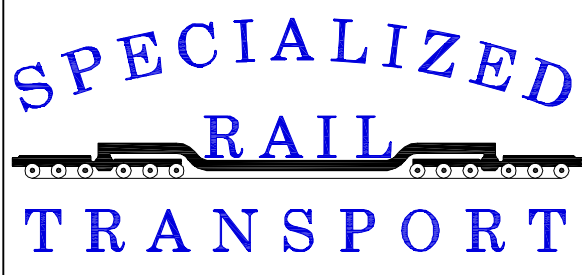
THE INFORMATION ON THIS DRAWING INCLUDING ALL DESIGNS, DETAILS, INVENTIONS, OR DEVELOPMENTS IS THE CONFIDENTIAL AND EXCLUSIVE PROPERTY OF SPECIALIZED RAIL TRANSPORT. NO PART OF THIS DRAWING MAY BE REPRODUCED OR BE TRANSMITTED WITHOUT THE EXPRESS WRITTEN CONSENT OF SPECIALIZED RAIL TRANSPORT.

Kasgro-SRT 20-Axle FD Railcar.dwg

2315 McCarty Drive
Houston, TX 77029

(713) 671-5699
Fax: (713) 675-2370

www.srt.cc
sales@srt.cc



RAIL KASGRO CORP
320 E. CHERRY ST. NEW CASTLE, PA

GENERAL ARRANGEMENT
450-TON 40' DEPRESSED
CENTER FLAT CAR